



DB10

Front LCR for large cinema rooms

Power Handling: 200w RMS
 Impedance: 8ohm
 Sensitivity: 95 dB (1w/1m)
 Freq Response: 48Hz - 20Khz (-3dB)
 Dimensions: H1040 x W400 x D180mm
 Mounting: 2 x 200x200 VESA

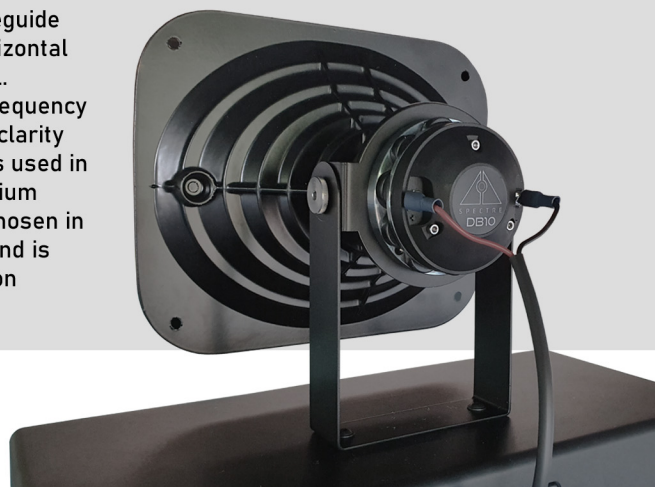
The DB10 is designed for the front three main channels in a large home cinema installation. It is a high efficiency design incorporating a British built 10" upper bass/mid frequency driver and a 1" pure Titanium compression driver in a cast Aluminium waveguide.

The cabinet profile is designed to fit behind acoustic projection screens and is only 180mm deep. The design matches in dimensions the DB10 Subwoofer, allowing the installer to create a seamless wall of speakers behind the screen.

ESS Waveguide HF Unit

A top mounted Constant Coverage High Frequency Waveguide has been implemented in the design to achieve the highest possible HF sound quality. The design incorporates a 1" pure Titanium compression driver with a carefully placed array of neodymium magnets which results in an extremely high magnetic field.

The cast aluminium elliptical waveguide maintains a nominal 80 degree horizontal x 60 degree vertical pattern control. The uniform on-axis and off-axis frequency response delivers more detail and clarity than lower cost soft dome tweeters used in many HiFi speaker designs. A Titanium compression driver is the design chosen in many specialist cinema speakers and is recommended by cinema installation professionals.

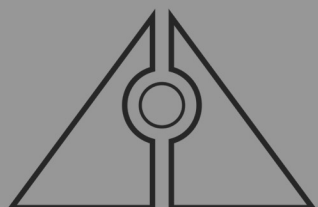


Bass/Mid Driver

The 10" drive unit is built in Dorset especially for Spectre by renowned manufacturer Volt Loudspeakers. Designed for upper bass and mid frequency reproduction to the highest standard. A diecast aluminium chassis supports a symmetrical field magnet and large voice coil with a net driver weight of just under 5kg. The doped cone and linen surround results in a smooth midrange response with superior punch and dynamics.

Cabinet

At only 180mm deep the system can be installed in a recess behind the projection screen or wall mounted using the multiple 400x400 VESA mounting points. The braced cabinet has a flared port and is finished in a fine textured matt black. Rear recessed gold terminals house a single input and a single crossed over output for the HF compression driver. Both the DB10 and DB10 SUB have matching dimensions, allowing for various configurations and uniform system design.



SPECTRE

www.SpectreAcoustics.com